

# ENVIRONMENTAL PRODUCT DECLARATION

IN ACCORDANCE WITH EN 15804+A2 & ISO 14025 / ISO 21930

Masonry Mortar  
CPI Mortars Ltd.



**EPD HUB, HUB-0009**

Publishing date 25 March 2022, last updated on 16 September 2024, valid until 25 March 2027

## GENERAL INFORMATION

### MANUFACTURER

Manufacturer	CPI Mortars Ltd.
Address	Willow House, Strathclyde Business Park, Bellshill, ML4 3PB
Contact details	stewart.mcgregor@cpieuromix.com
Website	www.cpieuromix.com

### EPD STANDARDS, SCOPE AND VERIFICATION

Program operator	EPD Hub, hub@epdhub.com
Reference standard	EN 15804+A2:2019 und ISO 14025
PCR	EPD Hub Core PCR Version 1.1, 5 Dec 2023
Sector	Construction product
Category of EPD	Third party verified EPD
Parent EPD number	
Scope of the EPD	Cradle to gate with options, A4-A5, and modules C1-C4, D
EPD author	Stewart McGregor CPI Mortars Ltd.
EPD verification	Independent verification of this EPD and data, according to ISO 14025: <input type="checkbox"/> Internal verification <input checked="" type="checkbox"/> External verification
EPD verifier	Magaly González Vázquez, as an authorized verifier acting for EPD Hub Limited

The manufacturer has the sole ownership, liability, and responsibility for the EPD. EPDs within the same product category but from different programs may not be comparable. EPDs of construction products may not be comparable if they do not comply with EN 15804 and if they are not compared in a building context.

### PRODUCT

Product name	Masonry Mortar
Additional labels	-
Product reference	-
Place of production	UK
Period for data	Calendar year 2023
Averaging in EPD	Multiple products and multiple factories
Variation in GWP-fossil for A1-A3	-32, +41 %

### ENVIRONMENTAL DATA SUMMARY

Declared unit	1 Tonne
Declared unit mass	1000 kg
GWP-fossil, A1-A3 (kgCO <sub>2</sub> e)	1.39E+02
GWP-total, A1-A3 (kgCO <sub>2</sub> e)	1.38E+02
Secondary material, inputs (%)	0.91
Secondary material, outputs (%)	68.2
Total energy use, A1-A3 (kWh)	272
Net freshwater use, A1-A3 (m <sup>3</sup> )	1.38

## PRODUCT AND MANUFACTURER

### ABOUT THE MANUFACTURER

Further information can be found at [www.cpieuromix.com](http://www.cpieuromix.com)

### PRODUCT DESCRIPTION

The product is a cement based mortar containing aggregates and admixtures. Cement mortar is used in many different masonry application like brick walls.

Further information can be found at [www.cpieuromix.com](http://www.cpieuromix.com).

### PRODUCT RAW MATERIAL MAIN COMPOSITION

Raw material category	Amount, mass %	Material origin
Metals	-	-
Minerals	100	UK
Fossil materials	-	-
Bio-based materials	-	-

### BIOGENIC CARBON CONTENT

Product's biogenic carbon content at the factory gate

Biogenic carbon content in product, kg C	-
Biogenic carbon content in packaging, kg C	0.0697

### FUNCTIONAL UNIT AND SERVICE LIFE

Declared unit	1 Tonne
Mass per declared unit	1000 kg
Functional unit	-
Reference service life	-

### SUBSTANCES, REACH - VERY HIGH CONCERN

The product does not contain any REACH SVHC substances in amounts greater than 0,1 % (1000 ppm).

# PRODUCT LIFE-CYCLE

## SYSTEM BOUNDARY

This EPD covers the life-cycle modules listed in the following table.

Product stage			Assembly stage		Use stage							End of life stage				Beyond the system boundaries		
A1	A2	A3	A4	A5	B1	B2	B3	B4	B5	B6	B7	C1	C2	C3	C4	D		
X	X	X	X	X	MND	MND	MND	MND	MND	MND	MND	X	X	X	X	X		
Raw materials	Transport	Manufacturing	Transport	Assembly	Use	Maintenance	Repair	Replacement	Refurbishment	Operational energy use	Operational water use	Deconstruction/ demolition	Transport	Waste processing	Disposal	Reuse	Recovery	Recycling

Modules not declared = MND. Modules not relevant = MNR

## MANUFACTURING AND PACKAGING (A1-A3)

The environmental impacts considered for the product stage cover the manufacturing of raw materials used in the production as well as packaging materials and other ancillary materials. Also, fuels used by machines, and handling of waste formed in the production processes at the manufacturing facilities are included in this stage. The study also considers the material losses occurring during the manufacturing processes as well as losses during electricity transmission.

The mortar is manufactured by adding the raw materials, cement, sand and additives together and mixing them as a dry blend. The mortar is then transported to a construction site in a silo or in a tanker. The mortar can also be sold in 20Kg, 25Kg and Bulk bags (paper/plastic) and delivered on pallets by third party or collected from our locations.

## TRANSPORT AND INSTALLATION (A4-A5)

Transportation impacts occurred from final products delivery to construction site (A4) cover fuel direct exhaust emissions, environmental impacts of fuel production, as well as related infrastructure emissions.

An average distance of transportation from production plant to building site is 52.5 kilometers, based on sales volume. The transportation method is assumed to be lorry. To be conservative, empty returns are included in this study as implemented through an average load factor in the ecoinvent transport datapoints. In reality, it may vary but as the role of transportation emissions in total results is small, the variety in load is assumed to be negligible. Transportation does not cause losses as the mortar is contained within the tank or silo.

The dry mortar blend is mixed with water at the installation site. The installation is done by hand and thus the energy consumption is deemed negligible but the silo requires electricity usage to mix the mortar and water is added to the dry mix for workability.

## PRODUCT USE AND MAINTENANCE (B1-B7)

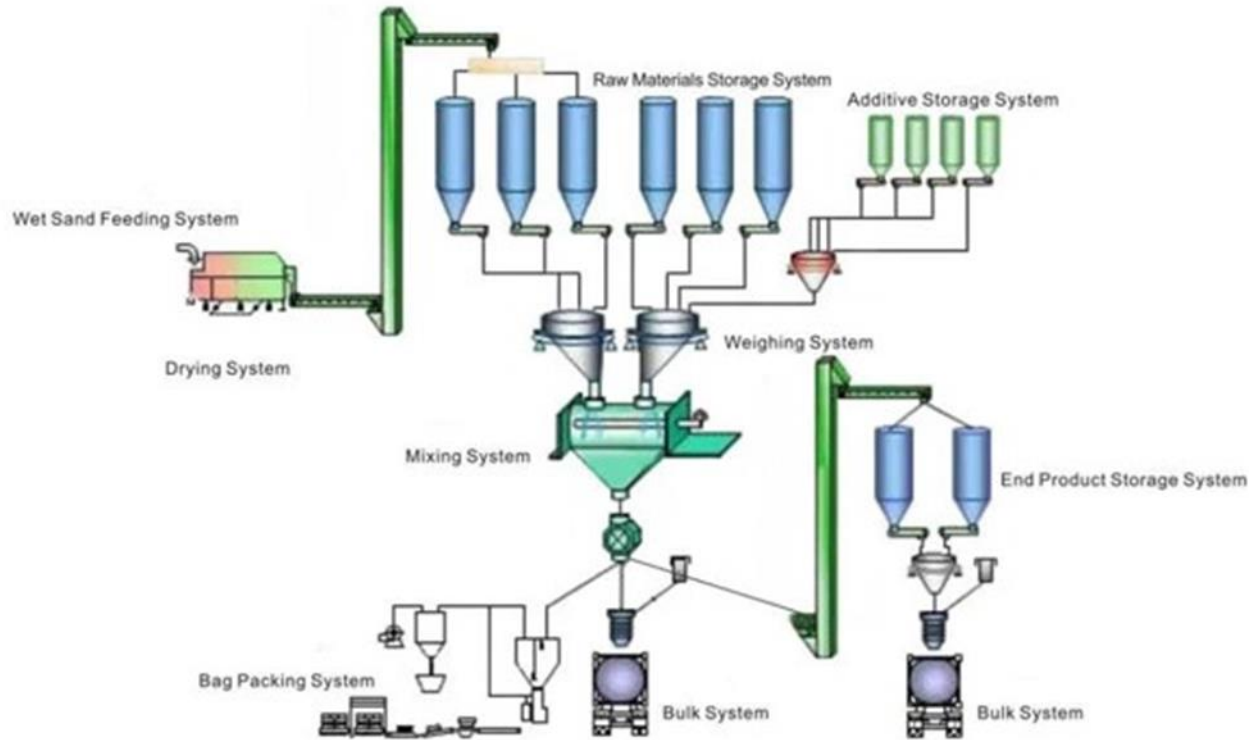
This EPD does not cover the use phase.

Air, soil, and water impacts during the use phase have not been studied.

### PRODUCT END OF LIFE (C1-C4, D)

At the end-of-life, in the demolition phase 100% of the waste is assumed to be collected as mixed construction waste. The demolition process consumes energy in the form of diesel fuel used by building machines. Energy consumption of the demolition process is assumed to be 0.01 kWh/kg (C1). The demolished mortar is delivered to the nearest construction waste treatment plant. It is estimated that there is no mass loss during the use of the product, therefore the end-of-life product is assumed that it has the same weight as the declared product. Transportation distance to the closest disposal area is estimated as 50 km and the transportation method is lorry which is the most common. (C2). At the waste treatment plant, waste that can be reused, recycled or recovered for energy is separated and diverted for further use. It can be assumed that 100% of mortar is transported to a waste treatment plant. A realistic assumption is made about 80% of mortar being recycled. The process losses of the waste treatment plant are assumed to be negligible (C3). The remaining 20% of mortar is sent to landfill (C4). Due to the recycling potential of mortar, they can be used as secondary raw material (Lei, Huang and Huang, 2020), which avoids the use of virgin raw materials. The 80% of mortar going to waste processing is crushed and recycled for use as aggregates after recycling. The recycled material content in the mortar itself is assumed to be 0% (D).

# MANUFACTURING PROCESS



## LIFE-CYCLE ASSESSMENT

### CUT-OFF CRITERIA

The study does not exclude any modules or processes which are stated mandatory in the reference standard and the applied PCR. The study does not exclude any hazardous materials or substances. The study includes all major raw material and energy consumption. All inputs and outputs of the unit processes, for which data is available for, are included in the calculation. There is no neglected unit process more than 1% of total mass or energy flows. The module specific total neglected input and output flows also do not exceed 5% of energy usage or mass.

### ALLOCATION, ESTIMATES AND ASSUMPTIONS

Allocation is required if some material, energy, and waste data cannot be measured separately for the product under investigation. All allocations are done as per the reference standards and the applied PCR. In this study, allocation has been done in the following ways:

Data type	Allocation
Raw materials	Allocated by mass or volume
Packaging material	Allocated by mass or volume
Ancillary materials	Not applicable
Manufacturing energy and waste	Allocated by mass or volume

### AVERAGES AND VARIABILITY

Type of average	Multiple products and multiple factories
Averaging method	Averaged by shares of total volume
Variation in GWP-fossil for A1-A3	-32, +41 %

The data from the manufacturing facilities was averaged to produce a generic EPD covering all CPI mortar types. The 2023 cement and aggregate usage was collated from 9 UK manufacturing facilities. The cement and aggregate contents were arithmetically averaged for this EPD. A weighted average was also calculated from total UK production and found to yield the same result as the arithmetically averaged figures. The total usage for Electricity, Gasoil and LPG for the 9 manufacturing facilities was collated and divided by the total volume produced by all facilities during 2023. CPI have four mortar strength categories namely M2, M4, M6 and M12. As the mortar strength increases, the cement content increases and consequently, the Kg CO<sub>2</sub>e increases. See Annex 1: A1-A3 Global Warming Kg CO<sub>2</sub>e for CPI mortar product range.

### LCA SOFTWARE AND BIBLIOGRAPHY

This EPD has been created using One Click LCA EPD Generator. The LCA and EPD have been prepared according to the reference standards and ISO 14040/14044. The EPD Generator uses Ecoinvent v3.8, Plastics Europe, Federal LCA Commons and One Click LCA databases as sources of environmental data.

# ENVIRONMENTAL IMPACT DATA

## CORE ENVIRONMENTAL IMPACT INDICATORS – EN 15804+A2, PEF

Impact category	Unit	A1	A2	A3	A1-A3	A4	A5	B1	B2	B3	B4	B5	B6	B7	C1	C2	C3	C4	D
GWP – total <sup>1)</sup>	kg CO <sub>2</sub> e	1.06E+02	6.18E+00	2.65E+01	1.38E+02	5.11E+00	1.98E+00	MND	MND	MND	MND	MND	MND	MND	3.31E-02	4.69E+00	9.77E+00	2.11E+00	-6.43E+00
GWP – fossil	kg CO <sub>2</sub> e	1.06E+02	6.17E+00	2.67E+01	1.39E+02	5.11E+00	1.73E+00	MND	MND	MND	MND	MND	MND	MND	3.31E-02	4.69E+00	9.76E+00	2.10E+00	-6.43E+00
GWP – biogenic	kg CO <sub>2</sub> e	0.00E+00	0.00E+00	-2.56E-01	-2.56E-01	0.00E+00	2.56E-01	MND	MND	MND	MND	MND	MND	MND	0.00E+00	0.00E+00	0.00E+00	0.00E+00	0.00E+00
GWP – LULUC	kg CO <sub>2</sub> e	1.48E-02	2.29E-03	6.78E-03	2.39E-02	3.05E-03	1.19E-03	MND	MND	MND	MND	MND	MND	MND	3.30E-06	1.73E-03	7.54E-03	2.13E-03	-8.84E-03
Ozone depletion pot.	kg CFC <sub>-11</sub> e	1.76E-06	1.44E-06	2.32E-06	5.52E-06	1.12E-06	5.90E-08	MND	MND	MND	MND	MND	MND	MND	7.07E-09	1.08E-06	2.18E-06	6.40E-07	-5.24E-07
Acidification potential	mol H <sup>+</sup> e	2.84E-01	2.62E-02	8.68E-02	3.97E-01	4.29E-02	2.95E-03	MND	MND	MND	MND	MND	MND	MND	3.44E-04	1.99E-02	8.08E-02	1.78E-02	-4.16E-02
EP-freshwater <sup>2)</sup>	kg Pe	8.14E-03	4.69E-05	2.20E-04	8.40E-03	1.67E-04	2.00E-05	MND	MND	MND	MND	MND	MND	MND	1.10E-07	3.84E-05	2.14E-04	3.27E-05	-3.65E-04
EP-marine	kg Ne	2.15E-02	7.85E-03	2.87E-02	5.81E-02	2.46E-02	6.62E-04	MND	MND	MND	MND	MND	MND	MND	1.52E-04	5.90E-03	2.99E-02	6.06E-03	-9.02E-03
EP-terrestrial	mol Ne	8.32E-01	8.66E-02	3.15E-01	1.23E+00	1.75E-01	7.84E-03	MND	MND	MND	MND	MND	MND	MND	1.67E-03	6.51E-02	3.28E-01	6.66E-02	-1.17E-01
POCP (“smog”) <sup>3)</sup>	kg NMVOCe	2.07E-01	2.78E-02	9.98E-02	3.35E-01	3.42E-02	1.96E-03	MND	MND	MND	MND	MND	MND	MND	4.59E-04	2.08E-02	9.22E-02	1.93E-02	-3.01E-02
ADP-minerals & metals <sup>4)</sup>	kg Sbe	1.28E-04	1.61E-05	9.65E-05	2.41E-04	2.17E-05	2.66E-06	MND	MND	MND	MND	MND	MND	MND	1.68E-08	1.10E-05	3.16E-05	7.08E-06	-6.26E-05
ADP-fossil resources	MJ	3.32E+02	9.35E+01	3.04E+02	7.30E+02	7.48E+01	2.22E+01	MND	MND	MND	MND	MND	MND	MND	4.45E-01	7.05E+01	1.74E+02	4.86E+01	-9.30E+01
Water use <sup>5)</sup>	m <sup>3</sup> e depr.	4.77E+00	4.31E-01	1.72E+00	6.92E+00	1.85E+00	2.44E-01	MND	MND	MND	MND	MND	MND	MND	1.20E-03	3.15E-01	1.43E+00	2.84E-01	-1.23E+01

1) GWP = Global Warming Potential; 2) EP = Eutrophication potential. Required characterisation method and data are in kg P-eq. Multiply by 3,07 to get PO<sub>4</sub>e; 3) POCP = Photochemical ozone formation; 4) ADP = Abiotic depletion potential; 5) EN 15804+A2 disclaimer for Abiotic depletion and Water use and optional indicators except Particulate matter and Ionizing radiation, human health. The results of these environmental impact indicators shall be used with care as the uncertainties on these results are high or as there is limited experience with the indicator.

### ADDITIONAL (OPTIONAL) ENVIRONMENTAL IMPACT INDICATORS – EN 15804+A2, PEF

Impact category	Unit	A1	A2	A3	A1-A3	A4	A5	B1	B2	B3	B4	B5	B6	B7	C1	C2	C3	C4	D
Particulate matter	Incidence	1.81E-06	7.18E-07	1.54E-06	4.07E-06	7.11E-07	1.62E-08	MND	MND	MND	MND	MND	MND	MND	9.22E-09	5.41E-07	7.66E-06	3.56E-07	-5.36E-07
Ionizing radiation <sup>6)</sup>	kBq 11235e	1.43E+00	4.66E-01	6.25E-01	2.52E+00	3.87E-01	7.64E-01	MND	MND	MND	MND	MND	MND	MND	2.05E-03	3.36E-01	1.43E+00	2.33E-01	-1.38E+00
Ecotoxicity (freshwater)	CTUe	2.21E+02	8.12E+01	2.17E+02	5.20E+02	9.20E+01	1.15E+01	MND	MND	MND	MND	MND	MND	MND	2.68E-01	6.34E+01	1.26E+02	3.60E+01	-1.17E+02
Human toxicity, cancer	CTUh	1.46E-07	2.23E-09	1.22E-08	1.61E-07	2.87E-09	4.85E-10	MND	MND	MND	MND	MND	MND	MND	1.03E-11	1.56E-09	5.46E-09	1.52E-09	-6.47E-09
Human tox. non-cancer	CTUh	2.74E-06	8.36E-08	2.63E-07	3.09E-06	1.33E-07	1.13E-08	MND	MND	MND	MND	MND	MND	MND	1.94E-10	6.27E-08	1.04E-07	2.40E-08	-1.20E-07
SQP <sup>7)</sup>	-	9.37E+02	1.07E+02	5.58E+01	1.10E+03	1.64E+02	8.17E+00	MND	MND	MND	MND	MND	MND	MND	5.79E-02	8.12E+01	2.24E+02	1.19E+02	-8.92E+01

6) EN 15804+A2 disclaimer for Ionizing radiation, human health. This impact category deals mainly with the eventual impact of low-dose ionizing radiation on human health of the nuclear fuel cycle. It does not consider effects due to possible nuclear accidents, occupational exposure nor due to radioactive waste disposal in underground facilities. Potential ionizing radiation from the soil, from radon and from some construction materials is also not measured by this indicator; 7) SQP = Land use related impacts/soil quality.

### USE OF NATURAL RESOURCES

Impact category	Unit	A1	A2	A3	A1-A3	A4	A5	B1	B2	B3	B4	B5	B6	B7	C1	C2	C3	C4	D
Renew. PER as energy <sup>8)</sup>	MJ	1.16E+02	1.16E+00	5.13E+01	1.68E+02	1.87E+01	3.98E+00	MND	MND	MND	MND	MND	MND	MND	2.54E-03	7.94E-01	7.36E+00	8.44E-01	-8.35E+00
Renew. PER as material	MJ	0.00E+00	0.00E+00	2.27E+00	2.27E+00	0.00E+00	-2.27E+00	MND	MND	MND	MND	MND	MND	MND	0.00E+00	0.00E+00	0.00E+00	0.00E+00	0.00E+00
Total use of renew. PER	MJ	1.16E+02	1.16E+00	5.36E+01	1.71E+02	1.87E+01	1.71E+00	MND	MND	MND	MND	MND	MND	MND	2.54E-03	7.94E-01	7.36E+00	8.44E-01	-8.35E+00
Non-re. PER as energy	MJ	3.32E+02	9.35E+01	2.96E+02	7.22E+02	7.48E+01	2.22E+01	MND	MND	MND	MND	MND	MND	MND	4.45E-01	7.05E+01	1.74E+02	4.86E+01	-9.30E+01
Non-re. PER as material	MJ	0.00E+00	0.00E+00	1.24E+01	1.24E+01	0.00E+00	-1.24E+01	MND	MND	MND	MND	MND	MND	MND	0.00E+00	0.00E+00	0.00E+00	0.00E+00	0.00E+00
Total use of non-re. PER	MJ	3.32E+02	9.35E+01	3.09E+02	7.34E+02	7.48E+01	9.85E+00	MND	MND	MND	MND	MND	MND	MND	4.45E-01	7.05E+01	1.74E+02	4.86E+01	-9.30E+01
Secondary materials	kg	9.13E+00	2.67E-02	2.98E-01	9.45E+00	3.07E-02	5.09E-03	MND	MND	MND	MND	MND	MND	MND	1.74E-04	1.96E-02	6.45E-02	1.75E-02	-1.02E-01
Renew. secondary fuels	MJ	3.54E+01	2.50E-04	6.80E-02	3.55E+01	3.35E-04	8.57E-06	MND	MND	MND	MND	MND	MND	MND	5.70E-07	1.97E-04	1.19E-03	6.74E-04	-7.31E-04
Non-ren. secondary fuels	MJ	5.32E+01	0.00E+00	0.00E+00	5.32E+01	0.00E+00	0.00E+00	MND	MND	MND	MND	MND	MND	MND	0.00E+00	0.00E+00	0.00E+00	0.00E+00	0.00E+00
Use of net fresh water	m <sup>3</sup>	1.33E+00	1.24E-02	4.16E-02	1.38E+00	4.53E-02	1.75E-01	MND	MND	MND	MND	MND	MND	MND	2.70E-05	9.13E-03	1.08E-01	5.24E-02	-2.96E-01

8) PER = Primary energy resources.

### END OF LIFE – WASTE

Impact category	Unit	A1	A2	A3	A1-A3	A4	A5	B1	B2	B3	B4	B5	B6	B7	C1	C2	C3	C4	D
Hazardous waste	kg	6.39E-01	1.13E-01	7.52E-01	1.50E+00	1.83E-01	5.05E-02	MND	MND	MND	MND	MND	MND	MND	5.96E-04	9.34E-02	3.58E-01	0.00E+00	-5.44E-01
Non-hazardous waste	kg	1.60E+01	1.92E+00	8.96E+00	2.69E+01	2.12E+00	1.25E+00	MND	MND	MND	MND	MND	MND	MND	4.19E-03	1.54E+00	3.05E+02	2.00E+02	-1.60E+01
Radioactive waste	kg	6.47E-04	6.36E-04	4.78E-04	1.76E-03	4.80E-04	1.92E-04	MND	MND	MND	MND	MND	MND	MND	3.13E-06	4.71E-04	1.15E-03	0.00E+00	-4.64E-04

### END OF LIFE – OUTPUT FLOWS

Impact category	Unit	A1	A2	A3	A1-A3	A4	A5	B1	B2	B3	B4	B5	B6	B7	C1	C2	C3	C4	D
Components for re-use	kg	0.00E+00	0.00E+00	0.00E+00	0.00E+00	0.00E+00	0.00E+00	MND	MND	MND	MND	MND	MND	MND	0.00E+00	0.00E+00	0.00E+00	0.00E+00	0.00E+00
Materials for recycling	kg	3.28E-02	0.00E+00	0.00E+00	3.28E-02	0.00E+00	0.00E+00	MND	MND	MND	MND	MND	MND	MND	0.00E+00	0.00E+00	8.00E+02	0.00E+00	0.00E+00
Materials for energy rec	kg	0.00E+00	0.00E+00	0.00E+00	0.00E+00	0.00E+00	0.00E+00	MND	MND	MND	MND	MND	MND	MND	0.00E+00	0.00E+00	0.00E+00	0.00E+00	0.00E+00
Exported energy	MJ	0.00E+00	0.00E+00	0.00E+00	0.00E+00	0.00E+00	0.00E+00	MND	MND	MND	MND	MND	MND	MND	0.00E+00	0.00E+00	0.00E+00	0.00E+00	0.00E+00

### ENVIRONMENTAL IMPACTS – EN 15804+A1, CML / ISO 21930

Impact category	Unit	A1	A2	A3	A1-A3	A4	A5	B1	B2	B3	B4	B5	B6	B7	C1	C2	C3	C4	D
Global Warming Pot.	kg CO <sub>2</sub> e	1.12E+02	3.79E+00	2.61E+01	1.42E+02	5.02E+00	1.72E+00	MND	MND	MND	MND	MND	MND	MND	3.27E-02	4.64E+00	9.64E+00	2.07E+00	-6.27E+00
Ozone depletion Pot.	kg CFC <sub>11</sub> e	2.96E-06	7.16E-07	1.91E-06	5.58E-06	8.94E-07	5.19E-08	MND	MND	MND	MND	MND	MND	MND	5.60E-09	8.55E-07	1.73E-06	5.08E-07	-4.34E-07
Acidification	kg SO <sub>2</sub> e	2.18E-01	1.26E-02	6.62E-02	2.97E-01	2.93E-02	2.34E-03	MND	MND	MND	MND	MND	MND	MND	2.45E-04	1.54E-02	6.02E-02	1.35E-02	-3.23E-02
Eutrophication	kg PO <sub>4</sub> <sup>3</sup> e	6.77E-02	2.83E-03	1.72E-02	8.77E-02	1.37E-02	9.12E-04	MND	MND	MND	MND	MND	MND	MND	5.69E-05	3.52E-03	1.92E-02	4.31E-03	-1.51E-02
POCP (“smog”)	kg C <sub>2</sub> H <sub>4</sub> e	8.17E-03	5.20E-04	6.26E-03	1.50E-02	8.11E-04	1.15E-04	MND	MND	MND	MND	MND	MND	MND	5.36E-06	6.03E-04	1.92E-03	5.47E-04	-2.19E-03
ADP-elements	kg Sbe	2.00E-04	1.03E-05	9.62E-05	3.07E-04	2.16E-05	2.57E-06	MND	MND	MND	MND	MND	MND	MND	1.65E-08	1.07E-05	3.10E-05	6.83E-06	-6.19E-05
ADP-fossil	MJ	4.65E+02	5.82E+01	3.04E+02	8.28E+02	7.48E+01	2.22E+01	MND	MND	MND	MND	MND	MND	MND	4.45E-01	7.05E+01	1.74E+02	4.86E+01	-9.29E+01

### ENVIRONMENTAL IMPACTS – GWP-GHG - THE INTERNATIONAL EPD SYSTEM

Impact category	Unit	A1	A2	A3	A1-A3	A4	A5	B1	B2	B3	B4	B5	B6	B7	C1	C2	C3	C4	D
GWP-GHG <sup>9)</sup>	kg CO <sub>2</sub> e	1.06E+02	6.17E+00	2.67E+01	1.39E+02	5.11E+00	1.73E+00	MND	MND	MND	MND	MND	MND	MND	3.31E-02	4.69E+00	9.76E+00	2.10E+00	-6.43E+00

9) This indicator includes all greenhouse gases excluding biogenic carbon dioxide uptake and emissions and biogenic carbon stored in the product as defined by IPCC AR 5 (IPCC 2013). In addition, the characterisation factors for the flows - CH<sub>4</sub> fossil, CH<sub>4</sub> biogenic and Dinitrogen monoxide - were updated in line with the guidance of IES PCR 1.2.5 Annex 1. This indicator is identical to the GWP-total of EN 15804:2012+A2:2019 except that the characterization factor for biogenic CO<sub>2</sub> is set to zero.

## VERIFICATION STATEMENT

### VERIFICATION PROCESS FOR THIS EPD

This EPD has been verified in accordance with ISO 14025 by an independent, third-party verifier by reviewing results, documents and compliancy with reference standard, ISO 14025 and ISO 14040/14044, following the process and checklists of the program operator for:

- This Environmental Product Declaration
- The Life-Cycle Assessment used in this EPD
- The digital background data for this EPD

Why does verification transparency matter? Read more online

This EPD has been generated by One Click LCA EPD generator, which has been verified and approved by the EPD Hub.

### THIRD-PARTY VERIFICATION STATEMENT

I hereby confirm that, following detailed examination, I have not established any relevant deviations by the studied Environmental Product Declaration (EPD), its LCA and project report, in terms of the data collected and used in the LCA calculations, the way the LCA-based calculations have been carried out, the presentation of environmental data in the EPD, and other additional environmental information, as present with respect to the procedural and methodological requirements in ISO 14025:2010 and reference standard.

I confirm that the company-specific data has been examined as regards plausibility and consistency; the declaration owner is responsible for its factual integrity and legal compliance.

I confirm that I have sufficient knowledge and experience of construction products, this specific product category, the construction industry, relevant standards, and the geographical area of the EPD to carry out this verification.

I confirm my independence in my role as verifier; I have not been involved in the execution of the LCA or in the development of the declaration and have no conflicts of interest regarding this verification.

Magaly González Vázquez, as an authorized verifier acting for EPD Hub Limited

Updated 16.09.2024



## ANNEX 1 : A1-A3 GLOBAL WARMING KG CO2E FOR CPI MORTAR PRODUCT RANGE

Mortar Category	Unit	M2	M4	M6	M12
A1-A3 GWP - fossil	Kg CO2e	94	131	154	196