

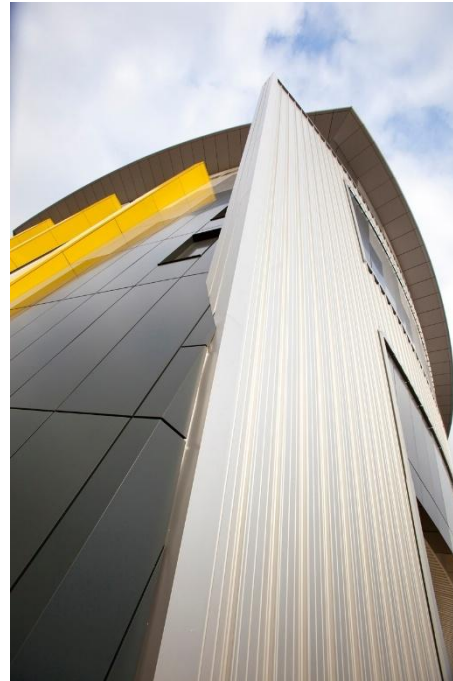


ENVIRONMENTAL PRODUCT DECLARATION

IN ACCORDANCE WITH EN 15804+A2 & ISO 14025

Eurobond Panel (0.5,0.5)

Euroclad Group



EPD HUB, HUB-3456

Publishing date 13 June 2025, last updated on 14 August 2025, valid until 12 June 2030.

Life Cycle Assessment study has been performed in accordance with the requirements of EN 15804, EPD Hub PCR version 1.1 (5 Dec 2023) and JRC characterization factors EF 3.1.

GENERAL INFORMATION

MANUFACTURER

Manufacturer	Euroclad Group
Address	Wentloog Corporate Park, St. Mellons, Cardiff CF3 2ER
Contact details	SustainabilityTeam@kingspan.com
Website	https://www.eurocladgroup.com/

EPD STANDARDS, SCOPE AND VERIFICATION

Program operator	EPD Hub, hub@epdhub.com
Reference standard	EN 15804+A2:2019 and ISO 14025
PCR	EPD Hub Core PCR Version 1.1, 5 Dec 2023
Sector	Construction product
Category of EPD	Third party verified EPD
Parent EPD number	-
Scope of the EPD	Cradle to gate with options, A4-A5, and modules C1-C4, D
EPD author	Becca Spurdle, Kingspan Insulated Panels
EPD verification	Independent verification of this EPD and data, according to ISO 14025: <input type="checkbox"/> Internal verification <input checked="" type="checkbox"/> External verification
EPD verifier	Magaly González Vázquez, as an authorized verifier acting for EPD Hub Limited

This EPD is intended for business-to-business and/or business-to-consumer communication. The manufacturer has the sole ownership, liability, and responsibility for the EPD. EPDs within the same product category but from different programs may not be comparable. EPDs of construction products may not be comparable if they do not comply with EN 15804 and if they are not compared in a building context.

PRODUCT

Product name	Eurobond Panel (0.5,0.5)
Additional labels	Europanel F5 Extra, Europanel S5 Extra, Rockspan Extra, Firemaster Extra *panels with 0.5mm/0.5mm nominal steel facings
Product reference	-
Place of production	Cardiff, United Kingdom
Period for data	01.01.22 - 31.12.22
Averaging in EPD	No grouping
Variation in GWP-fossil for A1-A3 (%)	-%

ENVIRONMENTAL DATA SUMMARY

Declared unit	1.00m ² (175mm thickness)
Declared unit mass	27.92 kg
GWP-fossil, A1-A3 (kgCO ₂ e)	5.59E+01
GWP-total, A1-A3 (kgCO ₂ e)	5.53E+01
Secondary material, inputs (%)	12.6
Secondary material, outputs (%)	24.6
Total energy use, A1-A3 (kWh)	197
Net freshwater use, A1-A3 (m ³)	1.02

PRODUCT AND MANUFACTURER

ABOUT THE MANUFACTURER

Euroclad Group is a leading international supplier of architectural metal building solutions, we supply our products to the construction industry, globally.

As a unified company with cross industry expertise, our customers can be confident we will deliver trusted building solutions through:

- Customer Excellence
- Nurturing the potential of our people
- Continually improving performance standards

PRODUCT DESCRIPTION

Euroclad Group's range of Eurobond Wall Panels offer high quality, insulated metal panel systems that deliver a clean, smooth and aesthetically appealing solution to the building envelope.

This EPD is intended to cover all Eurobond Panels available with both the internal and external steel faces specified in 0.5mm nominal steel thickness.

This EPD is therefore applicable to the following panels:

- Europanel F5 Extra
- Europanel S5 Extra
- Rockspan Extra
- Firemaster Extra

No averaging of data has been used in the creation of this EPD.

PRODUCT RAW MATERIAL MAIN COMPOSITION

Raw material category	Amount, mass %	Material origin
Metals	25	EU
Minerals	72	EU
Fossil materials	3	EU
Bio-based materials	-	-

BIOGENIC CARBON CONTENT

Product's biogenic carbon content at the factory gate

Biogenic carbon content in product, kg C	-
Biogenic carbon content in packaging, kg C	0.1557

FUNCTIONAL UNIT AND SERVICE LIFE

Declared unit	1.00m ² (175mm thickness)
Mass per declared unit	27.92 kg
Functional unit	-
Reference service life	-

SUBSTANCES, REACH - VERY HIGH CONCERN

The product does not contain any REACH SVHC substances in amounts greater than 0,1 % (1000 ppm).

PRODUCT LIFE-CYCLE

SYSTEM BOUNDARY

This EPD covers the life-cycle modules listed in the following table.

Product stage			Assembly stage		Use stage							End of life stage				Beyond the system boundaries		
A1	A2	A3	A4	A5	B1	B2	B3	B4	B5	B6	B7	C1	C2	C3	C4	D		
X	X	X	X	X	MND	MND	MND	MND	MND	MND	MND	X	X	X	X	X		
Raw materials	Transport	Manufacturing	Transport	Assembly	Use	Maintenance	Repair	Replacement	Refurbishment	Operational energy use	Operational water use	Deconstruction/demolition	Transport	Waste processing	Disposal	Reuse	Recovery	Recycling

Modules not declared = MND. Modules not relevant = MNR

MANUFACTURING AND PACKAGING (A1-A3)

The environmental impacts considered for the product stage cover the manufacturing of raw materials used in the production as well as packaging materials and other ancillary materials. Also, fuels used by machines, and handling of waste formed in the production processes at the manufacturing facilities are included in this stage. The study also considers the material losses occurring during the manufacturing processes as well as losses during electricity transmission.

A market-based approach is used in modelling the electricity mix utilized in the factory. The environmental impacts considered at the product stage cover the manufacturing of the product alongside the packaging materials and any other ancillary materials. The reporting in this stage also accounts for the fuels used by machines, material losses and waste formed in the manufacturing process. The manufacturing of the panels begins with the loading of metal coil onto the decoiler, before feeding the material into the roll forming machine. The coil is cold rolled through the roll forming machine gradually bending the metal into the desired shape. These two steel profiles are then bonded to mineral wool of the correct thickness and then cut to length. The finished panels are stacked, placed onto an MDF sheet with polystyrene bearers, and wrapped in protective film ready for transport.

All transportation distances of raw materials from supplier to manufacturing site have been included and assumptions made based on location of suppliers and most common method of transport. A transport assumption of 50km for our manufacturing waste to a waste contractor has been included in A3.

The use of green energy in manufacturing is demonstrated through contractual instruments (GOs, RECs, etc.), and its use is ensured throughout the validity period of this EPD.

TRANSPORT AND INSTALLATION (A4-A5)

Transportation impacts occurred from final products delivery to construction site (A4) cover fuel direct exhaust emissions, environmental impacts of fuel production, as well as related infrastructure emissions. The transportation distance is assumed to be an average of 305km. The insulated panels are made to order, specific to the building's requirements. Installation guides are available to assist the contractor with the correct installation of the product and any ancillaries. The installation scenario assumes steel fixings and a conservative estimate of electricity for a power tool (1 kWh) and diesel (2 kWh) for a crane. Impacts for additional fixings/material required for different applications can be advised by our technical teams. Installation losses are estimated at 2%. These losses, as well as packaging, are included as installation waste.

PRODUCT USE AND MAINTENANCE (B1-B7)

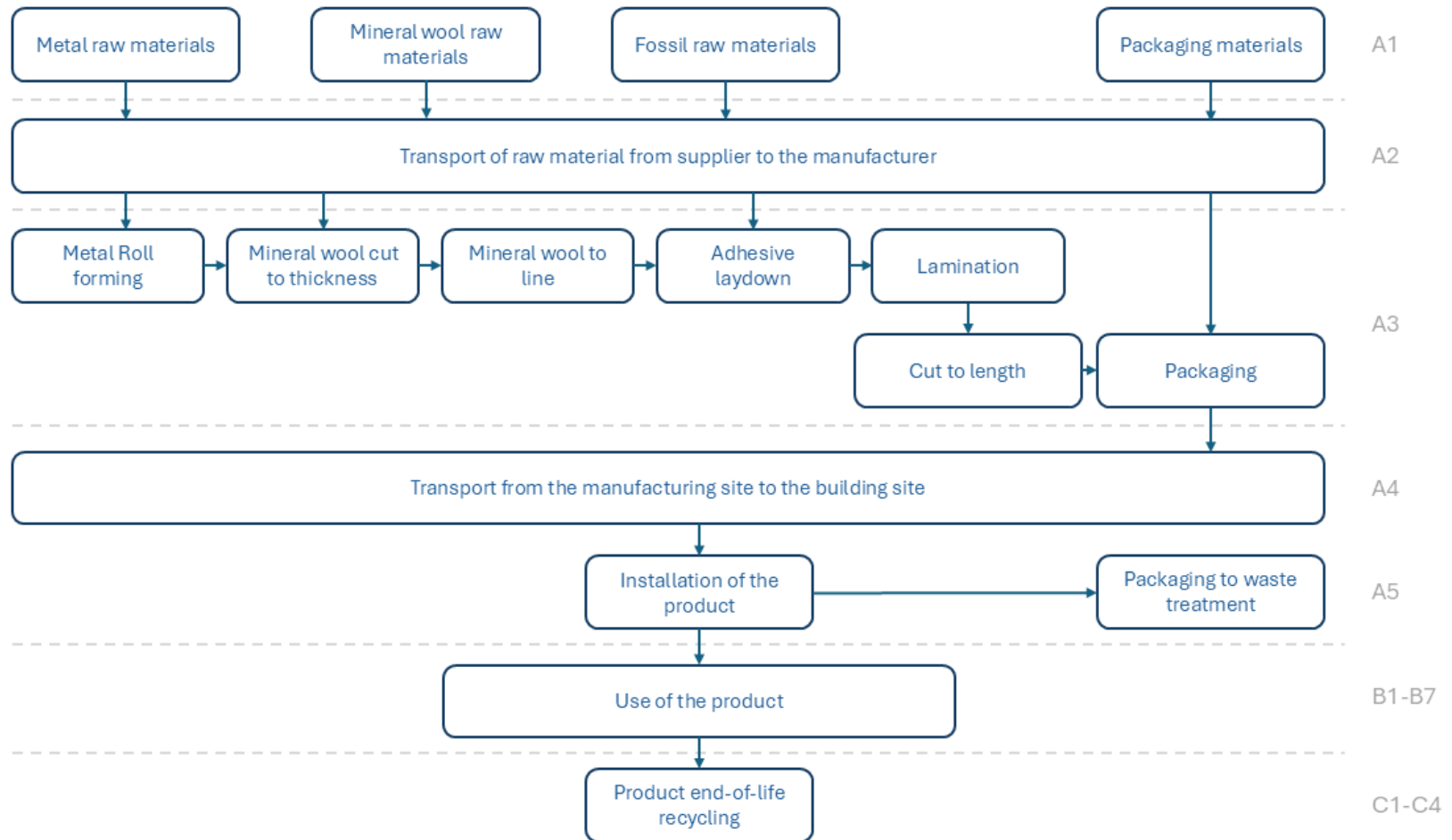
This EPD does not cover the use phase.

Air, soil, and water impacts during the use phase have not been studied.

PRODUCT END OF LIFE (C1-C4, D)

For removal of the product, a conservative estimate of electricity for a power tool (1 kWh) and diesel (2 kWh) for a crane has been made. At the end of the product service life, it is recommended that the panels are sent to a reclamation facility where the steel can be separated from the fiber and be recycled. 95% of steel is assumed to be recycled, with the remaining 5% landfilled according to 'World Steel Association, 2020'. The EOL of the fiber is assumed as landfill based on the current market. It is not recommended that whole panels are sent to landfill. In Module D, the net benefit of recycling steel and waste treatment of packaging materials is included as avoided material production (from recycling) and electricity and heat production (from incineration).

MANUFACTURING PROCESS



LIFE-CYCLE ASSESSMENT

CUT-OFF CRITERIA

The study does not exclude any modules or processes which are stated mandatory in the reference standard and the applied PCR. The study does not exclude any hazardous materials or substances. The study includes all major raw material and energy consumption. All inputs and outputs of the unit processes, for which data is available for, are included in the calculation. There is no neglected unit process more than 1% of total mass or energy flows. The module specific total neglected input and output flows also do not exceed 5% of energy usage or mass.

The production of capital equipment, construction activities, and infrastructure, maintenance and operation of capital equipment, personnel-related activities, energy and water use related to company management and sales activities are excluded.

VALIDATION OF DATA

Data collection for production, transport, and packaging was conducted using time and site-specific information, as defined in the general information section on page 1 and 2. Upstream process calculations rely on generic data as defined in the Bibliography section. Manufacturer-provided specific and generic data were used for the product's manufacturing stage. The analysis was performed in One Click LCA EPD Generator, with the 'Cut-Off, EN 15804+A2' allocation method, and characterization factors according to EN 15804:2012+A2:2019/AC:2021 and JRC EF 3.1.

ALLOCATION, ESTIMATES AND ASSUMPTIONS

Allocation is required if some material, energy, and waste data cannot be measured separately for the product under investigation. All allocations are done as per the reference standards and the applied PCR. In this study, allocation has been done in the following ways:

Data type	Allocation
Raw materials	No allocation
Packaging material	No allocation
Ancillary materials	Not applicable
Manufacturing energy and waste	Allocated by mass or volume

PRODUCT & MANUFACTURING SITES GROUPING

Type of grouping	No grouping
Grouping method	Not applicable
Variation in GWP-fossil for A1-A3, %	

This EPD is product and factory specific.

LCA SOFTWARE AND BIBLIOGRAPHY

This EPD has been created using One Click LCA EPD Generator. The LCA and EPD have been prepared according to the reference standards and ISO 14040/14044. The EPD Generator uses Ecoinvent v3.10.1 and One Click LCA databases as sources of environmental data. Allocation used in Ecoinvent 3.10.1 environmental data sources follow the methodology 'allocation, Cut-off, EN 15804+A2'.

ENVIRONMENTAL IMPACT DATA

The estimated impact results are only relative statements which do not indicate the end points of the impact categories, exceeding threshold values, safety margins or risks.

CORE ENVIRONMENTAL IMPACT INDICATORS – EN 15804+A2

Impact category	Unit	A1	A2	A3	A1-A3	A4	A5	B1	B2	B3	B4	B5	B6	B7	C1	C2	C3	C4	D
GWP – total ¹⁾	kg CO ₂ e	5.19E+01	6.05E-01	2.83E+00	5.53E+01	9.11E-01	4.80E+00	MND	MND	MND	MND	MND	MND	MND	9.73E-01	1.77E-01	2.13E+00	3.65E-01	-9.48E+00
GWP – fossil	kg CO ₂ e	5.19E+01	6.05E-01	3.40E+00	5.59E+01	9.10E-01	4.22E+00	MND	MND	MND	MND	MND	MND	MND	9.72E-01	1.77E-01	2.13E+00	3.65E-01	-9.48E+00
GWP – biogenic	kg CO ₂ e	0.00E+00	0.00E+00	-5.68E-01	-5.68E-01	1.99E-04	5.79E-01	MND	MND	MND	MND	MND	MND	MND	0.00E+00	0.00E+00	0.00E+00	0.00E+00	0.00E+00
GWP – LULUC	kg CO ₂ e	2.86E-02	2.35E-04	1.74E-03	3.06E-02	3.54E-04	1.60E-03	MND	MND	MND	MND	MND	MND	MND	3.80E-04	6.69E-05	2.36E-04	1.60E-04	-1.27E-03
Ozone depletion pot.	kg CFC-11e	3.80E-07	1.26E-08	8.97E-08	4.82E-07	1.90E-08	4.56E-08	MND	MND	MND	MND	MND	MND	MND	2.38E-08	3.63E-09	2.73E-09	8.47E-09	-3.81E-08
Acidification potential	mol H ⁺ e	3.30E-01	1.42E-03	1.22E-02	3.43E-01	2.15E-03	1.86E-02	MND	MND	MND	MND	MND	MND	MND	7.19E-03	3.99E-04	2.45E-03	1.97E-03	-3.92E-02
EP-freshwater ²⁾	kg Pe	1.58E-02	4.22E-05	1.51E-04	1.60E-02	6.36E-05	7.43E-04	MND	MND	MND	MND	MND	MND	MND	4.51E-05	1.22E-05	1.08E-04	2.67E-05	-4.01E-03
EP-marine	kg Ne	4.33E-02	3.71E-04	2.29E-03	4.59E-02	5.64E-04	5.68E-03	MND	MND	MND	MND	MND	MND	MND	3.21E-03	1.01E-04	6.97E-04	7.64E-04	-8.35E-03
EP-terrestrial	mol Ne	6.08E-01	4.01E-03	2.47E-02	6.37E-01	6.10E-03	5.87E-02	MND	MND	MND	MND	MND	MND	MND	3.52E-02	1.10E-03	7.17E-03	8.33E-03	-9.16E-02
POCP (“smog”) ³⁾	kg NMVOCe	1.69E-01	2.46E-03	1.07E-02	1.82E-01	3.73E-03	1.80E-02	MND	MND	MND	MND	MND	MND	MND	1.05E-02	6.83E-04	2.02E-03	2.99E-03	-3.09E-02
ADP-minerals & metals ⁴⁾	kg Sbe	2.97E-04	1.74E-06	4.07E-06	3.03E-04	2.60E-06	1.36E-05	MND	MND	MND	MND	MND	MND	MND	1.01E-06	5.39E-07	1.12E-05	9.57E-07	-8.63E-05
ADP-fossil resources	MJ	6.16E+02	9.06E+00	7.56E+01	7.00E+02	1.37E+01	4.70E+01	MND	MND	MND	MND	MND	MND	MND	1.65E+01	2.60E+00	2.59E+00	6.53E+00	-8.84E+01
Water use ⁵⁾	m ³ e depr.	1.36E+01	4.63E-02	2.06E+00	1.57E+01	7.00E-02	9.32E-01	MND	MND	MND	MND	MND	MND	MND	8.13E-02	1.31E-02	1.63E-01	2.62E-02	-1.53E+00

1) GWP = Global Warming Potential; 2) EP = Eutrophication potential. Required characterisation method and data are in kg P-eq. Multiply by 3,07 to get PO4e; 3) POCP = Photochemical ozone formation; 4) ADP = Abiotic depletion potential; 5) EN 15804+A2 disclaimer for Abiotic depletion and Water use and optional indicators except Particulate matter and Ionizing radiation, human health. The results of these environmental impact indicators shall be used with care as the uncertainties on these results are high or as there is limited experience with the indicator.

ADDITIONAL (OPTIONAL) ENVIRONMENTAL IMPACT INDICATORS – EN 15804+A2

Impact category	Unit	A1	A2	A3	A1-A3	A4	A5	B1	B2	B3	B4	B5	B6	B7	C1	C2	C3	C4	D
Particulate matter	Incidence	3.37E-06	5.83E-08	1.50E-07	3.58E-06	8.88E-08	3.29E-07	MND	MND	MND	MND	MND	MND	MND	1.90E-07	1.56E-08	3.03E-08	4.36E-08	-6.30E-07
Ionizing radiation ⁶⁾	kBq I1235e	2.36E+00	1.10E-02	4.18E-01	2.79E+00	1.65E-02	3.91E-01	MND	MND	MND	MND	MND	MND	MND	2.55E-01	3.21E-03	8.63E-03	6.43E-03	2.18E-01
Ecotoxicity (freshwater)	CTUe	2.45E+02	1.07E+00	1.22E+01	2.58E+02	1.61E+00	1.18E+01	MND	MND	MND	MND	MND	MND	MND	8.67E-01	3.21E-01	5.10E+00	7.06E-01	-2.26E+01
Human toxicity, cancer	CTUh	5.40E-08	1.01E-10	1.44E-09	5.56E-08	1.52E-10	2.28E-09	MND	MND	MND	MND	MND	MND	MND	1.22E-10	2.96E-11	3.16E-10	8.40E-11	-1.54E-09
Human tox. non-cancer	CTUh	4.01E-07	5.85E-09	1.09E-08	4.18E-07	8.83E-09	2.52E-08	MND	MND	MND	MND	MND	MND	MND	2.72E-09	1.66E-09	1.54E-08	2.91E-09	-7.45E-08
SQP ⁷⁾	-	2.01E+02	8.96E+00	4.69E+01	2.57E+02	1.38E+01	1.39E+01	MND	MND	MND	MND	MND	MND	MND	4.25E+00	2.22E+00	4.30E+00	8.72E+00	-3.09E+01

6) EN 15804+A2 disclaimer for Ionizing radiation, human health. This impact category deals mainly with the eventual impact of low-dose ionizing radiation on human health of the nuclear fuel cycle. It does not consider effects due to possible nuclear accidents, occupational exposure nor due to radioactive waste disposal in underground facilities. Potential ionizing radiation from the soil, from radon and from some construction materials is also not measured by this indicator; 7) SQP = Land use related impacts/soil quality.

USE OF NATURAL RESOURCES

Impact category	Unit	A1	A2	A3	A1-A3	A4	A5	B1	B2	B3	B4	B5	B6	B7	C1	C2	C3	C4	D
Renew. PER as energy ⁸⁾	MJ	4.45E+01	1.48E-01	7.07E+00	5.17E+01	2.23E-01	-8.18E-01	MND	MND	MND	MND	MND	MND	MND	2.12E+00	4.34E-02	3.59E-01	9.00E-02	-7.27E+00
Renew. PER as material	MJ	0.00E+00	0.00E+00	3.02E+00	3.02E+00	0.00E+00	-3.02E+00	MND	MND	MND	MND	MND	MND	MND	0.00E+00	0.00E+00	0.00E+00	0.00E+00	0.00E+00
Total use of renew. PER	MJ	4.45E+01	1.48E-01	1.01E+01	5.47E+01	2.23E-01	-3.84E+00	MND	MND	MND	MND	MND	MND	MND	2.12E+00	4.34E-02	3.59E-01	9.00E-02	-7.27E+00
Non-re. PER as energy	MJ	5.97E+02	9.06E+00	4.97E+01	6.56E+02	1.37E+01	2.02E+01	MND	MND	MND	MND	MND	MND	MND	1.65E+01	2.60E+00	-2.71E+01	6.53E+00	-8.84E+01
Non-re. PER as material	MJ	1.87E+01	0.00E+00	2.44E+01	4.31E+01	0.00E+00	-2.50E+01	MND	MND	MND	MND	MND	MND	MND	0.00E+00	0.00E+00	0.00E+00	-1.81E+01	0.00E+00
Total use of non-re. PER	MJ	6.16E+02	9.06E+00	7.41E+01	6.99E+02	1.37E+01	-4.79E+00	MND	MND	MND	MND	MND	MND	MND	1.65E+01	2.60E+00	-2.71E+01	-1.16E+01	-8.84E+01
Secondary materials	kg	3.51E+00	3.93E-03	2.54E-02	3.54E+00	5.91E-03	1.39E-01	MND	MND	MND	MND	MND	MND	MND	4.72E-03	1.15E-03	2.91E-03	2.32E-03	4.89E+00
Renew. secondary fuels	MJ	7.39E-03	4.96E-05	1.36E-03	8.81E-03	7.46E-05	4.55E-04	MND	MND	MND	MND	MND	MND	MND	1.29E-05	1.46E-05	1.28E-04	3.52E-05	-7.35E-04
Non-ren. secondary fuels	MJ	0.00E+00	0.00E+00	0.00E+00	0.00E+00	0.00E+00	0.00E+00	MND	MND	MND	MND	MND	MND	MND	0.00E+00	0.00E+00	0.00E+00	0.00E+00	0.00E+00
Use of net fresh water	m ³	9.73E-01	1.33E-03	4.75E-02	1.02E+00	2.02E-03	3.29E-02	MND	MND	MND	MND	MND	MND	MND	1.97E-03	3.72E-04	3.16E-03	3.75E-03	-2.32E-02

8) PER = Primary energy resources.

END OF LIFE – WASTE

Impact category	Unit	A1	A2	A3	A1-A3	A4	A5	B1	B2	B3	B4	B5	B6	B7	C1	C2	C3	C4	D
Hazardous waste	kg	9.24E+00	1.31E-02	7.34E-02	9.32E+00	1.98E-02	4.88E-01	MND	MND	MND	MND	MND	MND	MND	1.93E-02	3.76E-03	5.07E-02	8.34E-03	-2.98E+00
Non-hazardous waste	kg	9.53E+01	2.63E-01	1.40E+00	9.70E+01	3.96E-01	8.68E+00	MND	MND	MND	MND	MND	MND	MND	2.83E-01	7.68E-02	1.39E+00	1.82E-01	-2.38E+01
Radioactive waste	kg	5.94E-04	2.71E-06	9.85E-05	6.96E-04	4.08E-06	8.99E-05	MND	MND	MND	MND	MND	MND	MND	5.56E-05	7.96E-07	2.13E-06	1.59E-06	6.14E-05

END OF LIFE – OUTPUT FLOWS

Impact category	Unit	A1	A2	A3	A1-A3	A4	A5	B1	B2	B3	B4	B5	B6	B7	C1	C2	C3	C4	D
Components for re-use	kg	0.00E+00	0.00E+00	0.00E+00	0.00E+00	0.00E+00	0.00E+00	MND	MND	MND	MND	MND	MND	MND	0.00E+00	0.00E+00	0.00E+00	0.00E+00	0.00E+00
Materials for recycling	kg	0.00E+00	0.00E+00	9.21E-01	9.21E-01	0.00E+00	1.52E-01	MND	MND	MND	MND	MND	MND	MND	0.00E+00	0.00E+00	6.90E+00	0.00E+00	0.00E+00
Materials for energy rec	kg	0.00E+00	0.00E+00	0.00E+00	0.00E+00	0.00E+00	9.37E-01	MND	MND	MND	MND	MND	MND	MND	0.00E+00	0.00E+00	8.16E-01	0.00E+00	0.00E+00
Exported energy	MJ	0.00E+00	0.00E+00	9.93E-02	9.93E-02	0.00E+00	5.37E+00	MND	MND	MND	MND	MND	MND	MND	0.00E+00	0.00E+00	0.00E+00	0.00E+00	0.00E+00
Exported energy – Electricity	MJ	0.00E+00	0.00E+00	1.77E-02	1.77E-02	0.00E+00	9.59E-01	MND	MND	MND	MND	MND	MND	MND	0.00E+00	0.00E+00	5.71E-01	0.00E+00	0.00E+00
Exported energy – Heat	MJ	0.00E+00	0.00E+00	8.16E-02	8.16E-02	0.00E+00	4.41E+00	MND	MND	MND	MND	MND	MND	MND	0.00E+00	0.00E+00	2.63E+00	0.00E+00	0.00E+00

ENVIRONMENTAL IMPACTS – EN 15804+A1, CML / ISO 21930

Impact category	Unit	A1	A2	A3	A1-A3	A4	A5	B1	B2	B3	B4	B5	B6	B7	C1	C2	C3	C4	D
Global Warming Pot.	kg CO ₂ e	5.16E+01	6.01E-01	3.36E+00	5.55E+01	9.04E-01	4.21E+00	MND	MND	MND	MND	MND	MND	MND	9.68E-01	1.76E-01	2.13E+00	3.62E-01	-9.42E+00
Ozone depletion Pot.	kg CFC ₋₁₁ e	3.32E-07	1.00E-08	8.89E-08	4.31E-07	1.51E-08	3.98E-08	MND	MND	MND	MND	MND	MND	MND	1.91E-08	2.89E-09	2.31E-09	6.73E-09	-3.97E-08
Acidification	kg SO ₂ e	2.68E-01	1.13E-03	1.01E-02	2.79E-01	1.70E-03	1.44E-02	MND	MND	MND	MND	MND	MND	MND	5.09E-03	3.18E-04	1.93E-03	1.45E-03	-3.17E-02
Eutrophication	kg PO ₄ ³ e	8.31E-01	2.81E-04	2.30E-03	8.34E-01	4.25E-04	1.86E-02	MND	MND	MND	MND	MND	MND	MND	1.17E-03	7.97E-05	3.42E-04	4.12E-04	-5.51E-03
POCP (“smog”)	kg C ₂ H ₄ e	1.96E-02	1.15E-04	7.61E-04	2.05E-02	1.74E-04	1.19E-03	MND	MND	MND	MND	MND	MND	MND	3.85E-04	3.29E-05	1.16E-04	1.31E-04	-4.65E-03
ADP-elements	kg Sbe	2.89E-04	1.70E-06	4.02E-06	2.94E-04	2.54E-06	1.33E-05	MND	MND	MND	MND	MND	MND	MND	9.89E-07	5.27E-07	1.11E-05	9.34E-07	-8.62E-05
ADP-fossil	MJ	5.77E+02	8.88E+00	6.76E+01	6.53E+02	1.34E+01	4.11E+01	MND	MND	MND	MND	MND	MND	MND	1.31E+01	2.54E+00	2.46E+00	6.42E+00	-9.30E+01

ENVIRONMENTAL IMPACTS – GWP-GHG

Impact category	Unit	A1	A2	A3	A1-A3	A4	A5	B1	B2	B3	B4	B5	B6	B7	C1	C2	C3	C4	D
GWP-GHG ⁹⁾	kg CO ₂ e	5.19E+01	6.05E-01	3.40E+00	5.59E+01	9.11E-01	4.22E+00	MND	MND	MND	MND	MND	MND	MND	9.73E-01	1.77E-01	2.13E+00	3.65E-01	-9.48E+00

9) This indicator includes all greenhouse gases excluding biogenic carbon dioxide uptake and emissions and biogenic carbon stored in the product as defined by IPCC AR 5 (IPCC 2013). In addition, the characterisation factors for the flows - CH₄ fossil, CH₄ biogenic and Dinitrogen monoxide - were updated in line with the guidance of IES PCR 1.2.5 Annex 1. This indicator is identical to the GWP-total of EN 15804:2012+A2:2019 except that the characterization factor for biogenic CO₂ is set to zero.

THIRD-PARTY VERIFICATION STATEMENT

EPD Hub declares that this EPD is verified in accordance with ISO 14025 by an independent, third-party verifier. The project report on the Life Cycle Assessment and the report(s) on features of environmental relevance are filed at EPD Hub. EPD Hub PCR and ECO Platform verification checklist are used.

EPD Hub is not able to identify any unjustified deviations from the PCR and EN 15802+A2 in the Environmental Product Declaration and its project report.

EPD Hub maintains its independence as a third-party body; it was not involved in the execution of the LCA or in the development of the declaration and has no conflicts of interest regarding this verification.

The company-specific data and upstream and downstream data have been examined as regards plausibility and consistency. The publisher is responsible for ensuring the factual integrity and legal compliance of this declaration.

The software used in creation of this LCA and EPD is verified by EPD Hub to conform to the procedural and methodological requirements outlined in ISO 14025:2010, ISO 14040/14044, EN 15804+A2, and EPD Hub Core Product Category Rules and General Program Instructions.

[Verified tools](#)

Tool verifier: Magaly Gonzalez Vazquez

Tool verification validity: 27 March 2025 - 26 March 2028

Magaly González Vázquez, as an authorized verifier acting for EPD Hub Limited
13.06.2025



ANNEX 1

SCALING TABLE

Thickness of product		75mm		100mm		125mm		150mm		175mm		200mm		240mm		300mm	
Impact Category		A1-A3	A-C	A1-A3	A-C	A1-A3	A-C	A1-A3	A-C	A1-A3	A-C	A1-A3	A-C	A1-A3	A-C	A1-A3	A-C
EN 15804+A2, PEF	GWP- Total	0.66	0.69	0.75	0.77	0.83	0.84	0.92	0.92	1.00	1.00	1.08	1.08	1.22	1.20	1.42	1.39
	GWP - Fossil	0.66	0.69	0.75	0.77	0.83	0.84	0.92	0.92	1.00	1.00	1.08	1.08	1.22	1.20	1.42	1.39
	GWP - Biogenic	1.00	0.59	1.00	0.67	1.00	0.75	1.00	0.88	1.00	1.00	1.13	1.00	1.26	1.00	1.47	1.47
	GWP - LULUC	0.68	0.68	0.76	0.76	0.84	0.84	0.92	0.92	1.00	1.00	1.08	1.08	1.21	1.21	1.41	1.40
	Ozone depletion pot.	0.72	0.74	0.79	0.80	0.86	0.87	0.93	0.93	1.00	1.00	1.07	1.06	1.18	1.17	1.35	1.33
	Acidification potential	0.58	0.60	0.69	0.70	0.79	0.80	0.90	0.90	1.00	1.00	1.11	1.10	1.28	1.26	1.53	1.50
	EP - Freshwater	0.71	0.71	0.78	0.78	0.86	0.85	0.93	0.93	1.00	1.00	1.07	1.07	1.19	1.19	1.36	1.36
	EP - Marine	0.66	0.70	0.74	0.77	0.83	0.85	0.92	0.92	1.00	1.00	1.09	1.07	1.22	1.19	1.43	1.37
	EP - Terrestrial	0.60	0.64	0.70	0.73	0.80	0.82	0.90	0.91	1.00	1.00	1.10	1.09	1.26	1.23	1.49	1.45
	POCP ("smog")	0.66	0.69	0.75	0.77	0.83	0.85	0.92	0.92	1.00	1.00	1.08	1.08	1.22	1.20	1.42	1.38
	ADP - minerals & metals	0.65	0.67	0.74	0.75	0.83	0.83	0.91	0.92	1.00	1.00	1.09	1.08	1.22	1.22	1.43	1.42
ADP - fossil resources	0.71	0.72	0.78	0.79	0.85	0.86	0.93	0.93	1.00	1.00	1.07	1.07	1.19	1.18	1.37	1.36	
EN 15804+A1, CML/ISO 21930	Global Warming Potential	0.66	0.69	0.75	0.77	0.83	0.84	0.92	0.92	1.00	1.00	1.08	1.08	1.22	1.20	1.42	1.39